

# REINTRODUCING.....

# THE SEARLE CENTER FOR ADVANCING LEARNING & TEACHING

2022-2023 ANNUAL REPORT

## OUR HIGHLIGHTS

### (Re)imagining Searle

- Welcomed **4 new staff** members to lead assessment, curricular change, inclusive teaching in STEM, and graduate student instructor initiatives.
- Rebuilt the **website**, including 114 new peer-reviewed pages and 8 evidence-based **Learning & Teaching Guides** with creative commons licenses that reflect our new integrated, collaborative approach and commitment to educational equity.
- Engaged in a year-long **strategic planning** process that resulted in a revised mission and new vision, values, priorities, and goals.
- Renovated the **Searle House** to improve efficiency, health, and morale and make a more welcoming gathering space, including updating the **Menges Library** with \$10,500 in gifts from Gay Menges in memory of Robert Menges and Bernie Dobroski.
- Devised a centralized **data collection** process with Airtable that integrates service requests, event signups, NU collaborations, and strategic communications.

### (Re)engaging the Community

- Co-created and facilitated the **3rd Practicum** on Universal Design for Learning in collaboration with TLT, Libraries, and Accessible NU, which reached 250 participants, resulted in an **Open Educational Resource**, and completed the **HLC Quality Initiative**.
- Redesigned 5 signature **Searle programs** with an emphasis on centering diversity, equity, inclusion, and justice: Reflective & Effective Teaching, Searle Fellows, Academic Kickoff, Formative Feedback Partners, and Graduate Teaching Fellows.
- Relunched the **Searle Fellows** program after conducting interviews with former fellows and mentors, which yielded a record number of applications and 20 accepted fellows as part of the 25th cohort.
- Developed a decentralized **assessment strategy** to prepare for HLC visit with three focal schools and an emphasis on building relationships and capacity.
- Responded to the emergence of **generative AI** tools by creating knowledge-sharing sessions, AI tool labs, and 4 Learning and Teaching Guides.

### Mission

Since 1992 the Searle Center's mission has been to advance learning. We are committed to deepening reflective and evidence-informed pedagogical practices, promoting inclusive teaching that fosters belonging, and stimulating assessment to drive substantive course/curricular development.

### Vision

Sparking the intellectual curiosity of Northwestern University educators aspiring to create transformative learning experiences so that all students can thrive.

### Values

Critical Reflection  
Meaningful Learning

Multi-vocal Evidence  
Diverse Collaborations



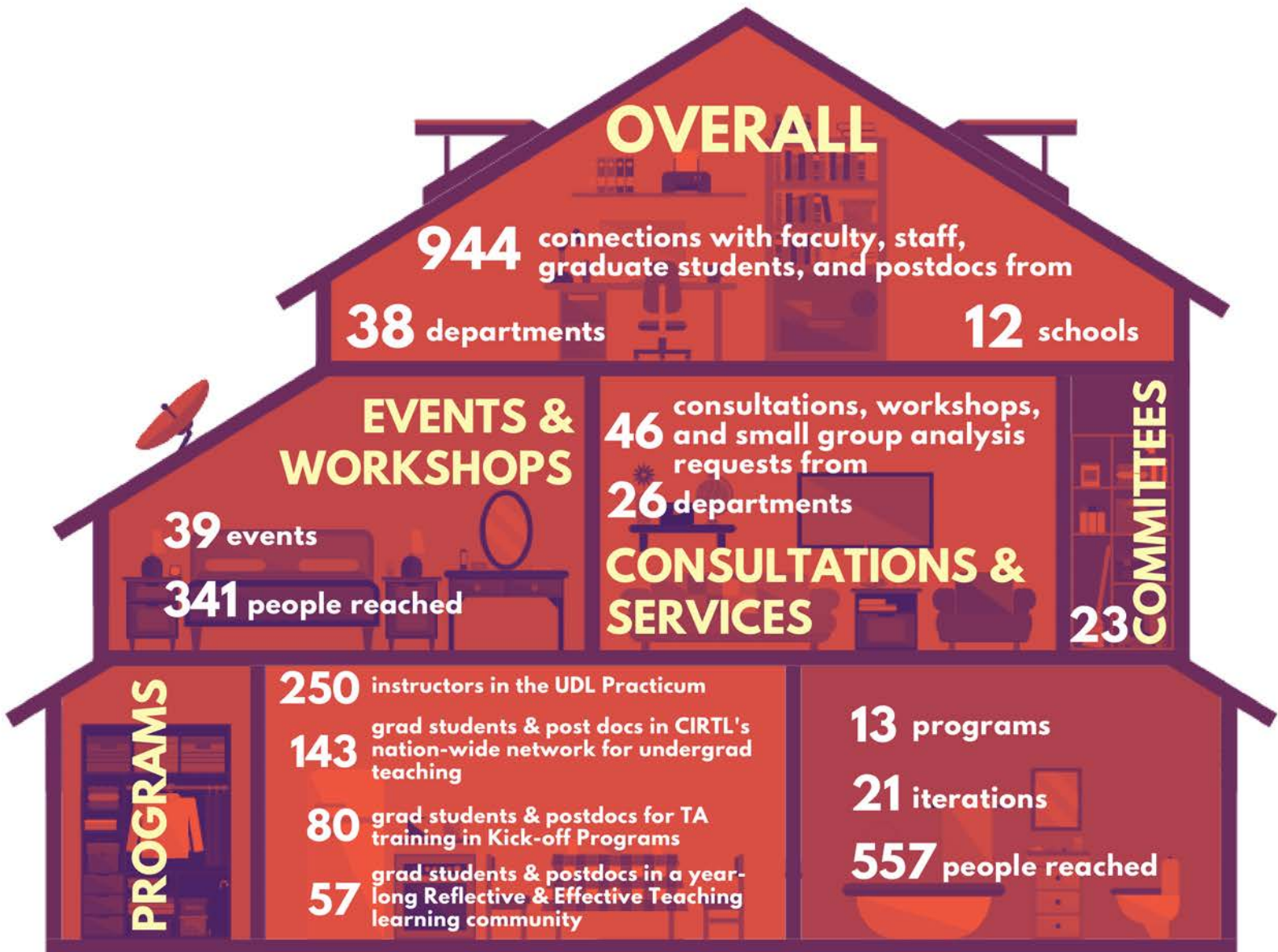
OUR SEVEN INTERCONNECTED  
FOCUS AREAS

Northwestern

SEARLE CENTER  
FOR ADVANCING LEARNING AND TEACHING



# OUR REACH & IMPACT



BTAA CTL MEETING  
JUNE 21-22, 2023

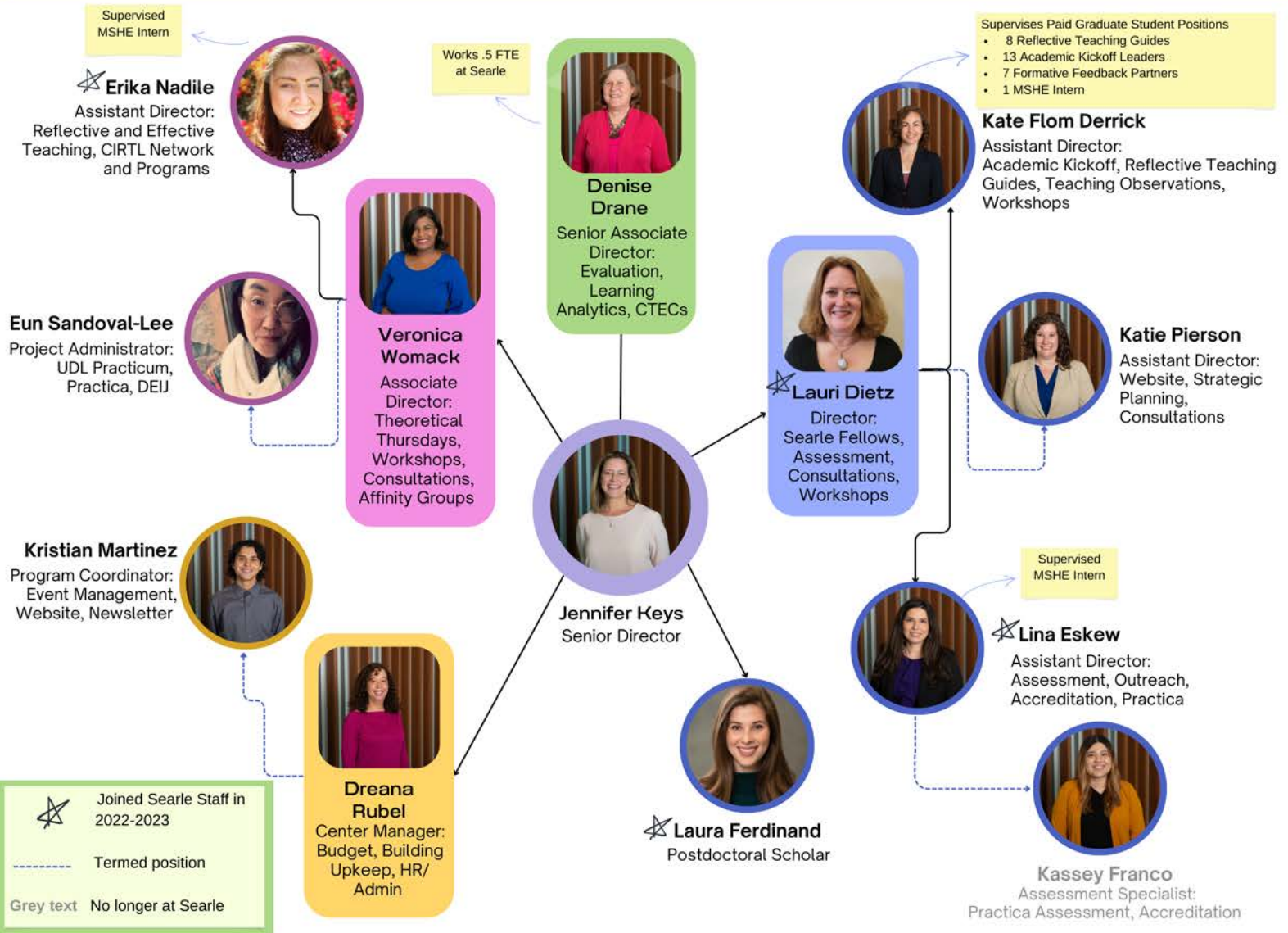
GRAD WINTER RETREAT  
FEB. 9, 2023

CORBIN CAMPBELL TALK  
APRIL 13, 2023

TEACHX COMMITTEE & UNIVERSITY  
TEACHING AWARD PANEL  
MAY 17-18, 2023

NEW FACULTY WORKSHOP  
SEPTEMBER 14 & 19, 2022

# OUR PEOPLE, OUR FUTURE



## LOOKING AHEAD

As we build on the successes and lessons of this past year and begin to operationalize our strategic plan, questions at the forefront coalesce around ways that we can demonstrate our value as a lever for organizational change by investing in initiatives that advance larger institutional priorities:

- How do we continue to cultivate and deepen partnerships within the larger student success ecosystem?
- How do we contribute our expertise to conversations about the ways in which teaching is evaluated for awards and promotions?
- How do we leverage the university teaching award winners to elevate the conversation around learning and teaching?
- How do we maximize systematization efforts in the final academic year before the HLC visit?
- How do we stimulate and support curricular change at the school- or program-level?
- How do we measure the impact of our programs and events on student learning?
- How do we continue to advance diversity, equity, inclusion, and justice within Searle as well as across the university community?